



# Metropolitan Detroit Area Hospital Services Inc.

## Standard Linen Catalog 2025



# 2 Pediatric Gowns



Small  
Pediatric  
Gown



**MDAHS Catalog #**

**P2080**

**Medline #MDT011386S**

**Item Description**

Gown, pediatric, Small, 100% polyester inherently flame retardant to meet all currently existing Federal Flammability Regulations. Tiger print on yellow background, center back opening.

**MDAHS Catalog #**

**P2090**

**Medline #MDT011386M**

**Item Description**

Gown, pediatric, Medium, 100% polyester inherently flame retardant to meet all currently existing Federal Flammability Regulations. Tiger print on green background, center back opening.



Medium Pediatric  
Gown



**MDAHS Catalog #**

**P2100**

**Medline #MDT011386L**

**Item Description**

Gown, pediatric, Large, 100% polyester inherently flame retardant to meet all currently existing Federal Flammability Regulations. Tiger print on blue background, center back opening.



Large  
Pediatric  
Gown





# 3 Universal Gowns



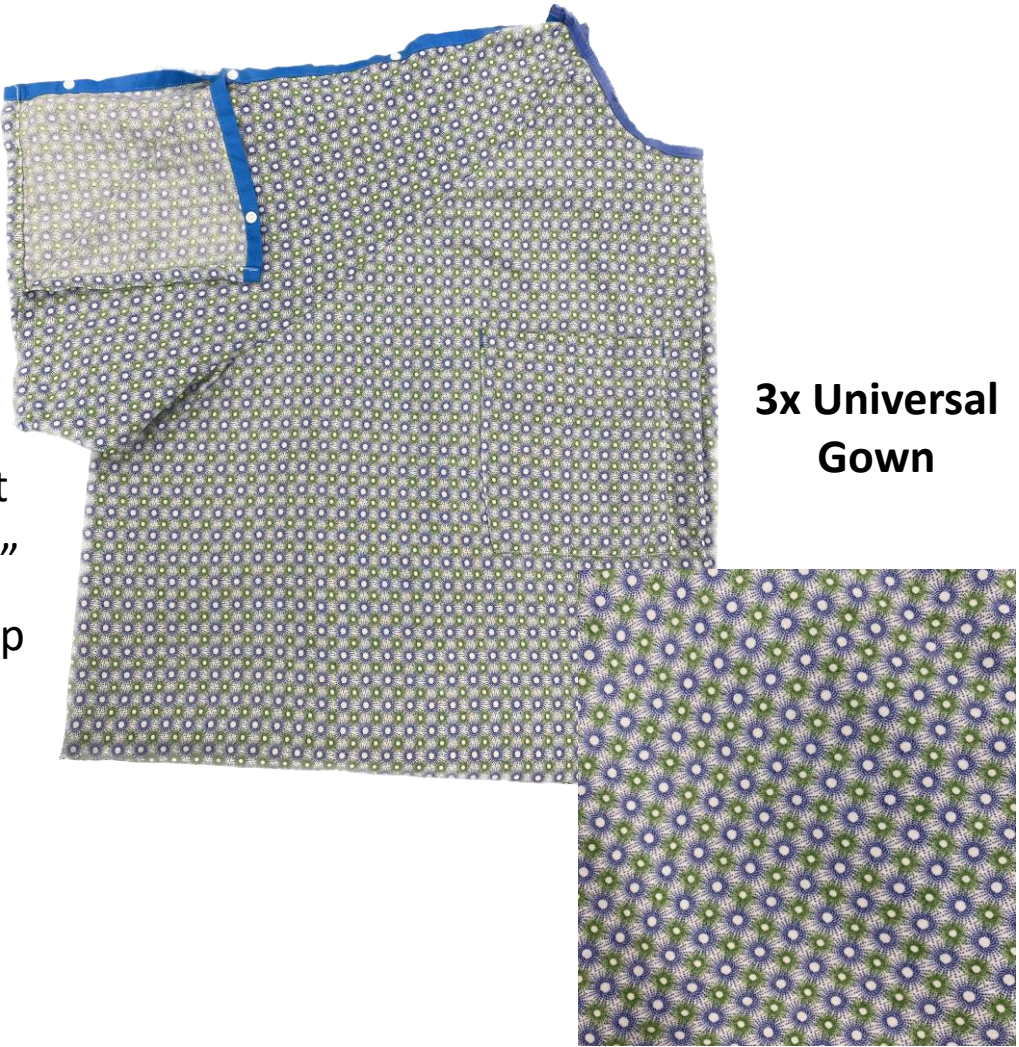
Large Universal Gown

**MDAHS Catalog #**  
**G1050**  
**Cromwell #12170**  
**Item Description**

Universal Gown, Large, 100% Polyester, Angle back, Sunburst Print on Blue background, 6"x6" Telemetry Pocket, IV Plastic Snap Sleeve, 47" Long, 65" Sweep

**MDAHS Catalog #**  
**G1060**  
**Cromwell #12172**  
**Item Description**

Universal Gown, 3x, 100% Polyester, Angle back, Sunburst Print on Gray background, 6"x6" Telemetry Pocket, IV Plastic Snap Sleeve, 47" Long, 85" Sweep



3x Universal Gown



10x Universal Gown

**MDAHS Catalog #**  
**G1070**  
**Cromwell #12171**  
**Item Description**

Universal Gown, 10x, 100% Polyester, Angle back, Sunburst Print on Tan background, 6"x6" Telemetry Pocket, IV Plastic Snap Sleeve, 48" Long, 101" Sweep



# 4 Safety Gowns

Large Safety Gown



**MDAHS Catalog #**

**G1084**

**Cromwell #**

**Item Description**

Safety Gown, Large, Fashion Blend 55%  
Cotton/45% Polyester, Full Back with Plastic Snaps

3XL-5XL Safety Gown



**MDAHS Catalog #**

**G1089**

**Cromwell #**

**Item Description**

Safety Gown, 3XL-5XL, Fashion Blend 55%  
Cotton/45% Polyester, Full Back with Plastic Snaps

# 5 Other Gowns



**X-Ray Gown**

**MDAHS Catalog #**  
**G1093AX**

**Medline #MDTOG2RTSSNO**

**Item Description**

X-Ray Gown, Adult, 3X-Large, no snaps, 55% cotton/45% polyester blend, 4 oz. Drill or equivalent. White background with blue snowflakes, 55” Long, 78” Sweep



**Surgeon Gown**

**MDAHS Catalog #**  
**G1080**

**Medline #MDTSG5RORUB**

**Item Description**

Gown, Mammography Jacket, OSFM, 35% Cotton/65% Polyester, Crisscross front Inside/Outside Ties, 29” Long, 80” Sweep, Ruby w/Pink Binding



**Mammography Gown**

**MDAHS Catalog #**  
**S3070**

**Medline #MDT01090XL**

**Item Description**

Gown, Surgeon, Large, Liquid Resistant Polyester Single Ply Front and Sleeves, 55% Cotton /45% Polyester, Vat Dyed, Ceil Blue, Percalé Back Panels, Blue Polyester Cuffs, 100 Space Utilization grid.



6 Scrubs



Scrub Shirt

MDAHS Catalog #

S3155, S3160, S3170, S3180, S3190, S3194, S3195, S3196, S3197

Medline #710PTZXS-CF, 710PTZS-CF, 710PTZM-CF, 710PTZL-CF, 710PTZXL-CF, 710PTZXXL-CF, 710PTZXXXL-CF, 710PTZ4X-CA, 710PTZ5X-CM

Item Description

Shirt, scrub, Large, Shirt, scrub, Small, 55% cotton / 45% polyester blend, Vat-dyed Misty Green, Slipover style with reinforced V-neck; colored binding stitched across back of neck to designate size, set-in short sleeves and left breast pocket on each side for reversibility. Neck binding color identifies size [XS (aqua), S (yellow), M (tan), L (white), XL (pink), 2XL (jade), 3XL (blue), 4XL (bright yellow), 5XL (black)]

MDAHS Catalog #

S3085, S3090, S3100, S3110, 3120, S3124, S3125, S3126, S3127

Medline #700PTZXS-CF, 700PTZS-CF, 700PTZM-CF, 700PTZL-CF, 700PTZXL-CF, 700PTZXXL-CF, 700PTZXXL-CF, 700PTZ4XL-CA, #700PTZ5XL-CM

Item Description

Pants, scrub, Large, 55% cotton / 45% polyester blend, Vat-dyed Misty Green, Pajama style, with color coded drawstring for sizing, pocket on left hip of each side for reversibility. No fly opening. Drawstring color identifies size [XS (aqua), S (yellow), M (tan), L (white), XL (pink), 2XL (jade), 3XL (blue), 4XL (bright yellow), 5XL (black)]



Scrub Pant

MDAHS Catalog #

S3072, S3073, S3075, S3077

Medline #849NTZM, #849NTZL, #849NTZ2X, #849NTZ4X

Item Description

Jacket, warm-up, 55/45, 4.3 oz. Angelstat, Vat-dyed Misty Green, Cardigan Style, collarless, Round neck, long sleeves with stockinette cuff, 2 lower pockets, raglan sleeves, snap front closure. Neck binding color identifies size M (tan), L (white), 2XL (green), 4X (orange)



Warm-up Jacket

# 7 Pajama Bottoms

Large Pajama Bottom



MDAHS Catalog #

**G1132**

**Medline #8850JTHL**

Item Description

Pajama bottom, Adult, LG/XL, 35% Cotton/65% Polyester blend, vat dyed ceil blue, elastic waist, pocket on both hips, 32"-46" waist, No fly opening.

3XL Pajama Bottom



MDAHS Catalog #

**G1134**

**Medline #8850JNTXXXL**

Item Description

Pajama bottom, Adult, 3XL, 35% Cotton/65% Polyester blend, vat dyed navy blue, elastic waist, pocket on both hips, 38"-54" waist, No fly opening.

5XL Pajama Bottom



MDAHS Catalog #

**G1136**

**Medline #8850JEG5XL**

Item Description

Pajama bottom, Adult, 5XL, 35% Cotton/65% Polyester blend, vat dyed black, elastic waist, pocket on both hips, 48"-72" waist, No fly opening.

# 7 Pajama Bottoms

5XL Pajama Bottom



**MDAHS Catalog #**

**G1136**

**Medline #8850JEG5XL**

**Item Description**

Pajama bottom, Adult, 5XL, 35% Cotton/65% Polyester blend, vat dyed hunter green, elastic waist, pocket on both hips, 48"-72" waist, No fly opening.



# 8 Blankets & Pillowcases

**Bath Blanket**



**MDAHS Catalog #**

**G1030**

**Medline #MDTB3B17R**

**Item Description**

Blanket, bath, 70" X 90",  
double-faced flannel, unbleached,  
86% cotton, 14% polyester,  
hemmed ends, approx. 1.7 lbs.  
each.

**Thermal Blanket**



**MDAHS Catalog #**

**G1040**

**Medline #MDTTB4B23WHIR**

**Item Description**

Thermal Spread/Blanket, 66" X  
96", snag free, tightly woven, pre-  
shrunk, white color, 55%  
cotton/45% polyester, approx.  
2.9lbs. each.

**Pillowcase**



**MDAHS Catalog #**

**G1140**

**Medline #MDTR1039914PC**

**Item Description**

Pillowcase, micropoly, white, 100 %  
polyester, 42" X 34". 2" hem.



# 9 Flat & Draw Sheets

Draw Sheet



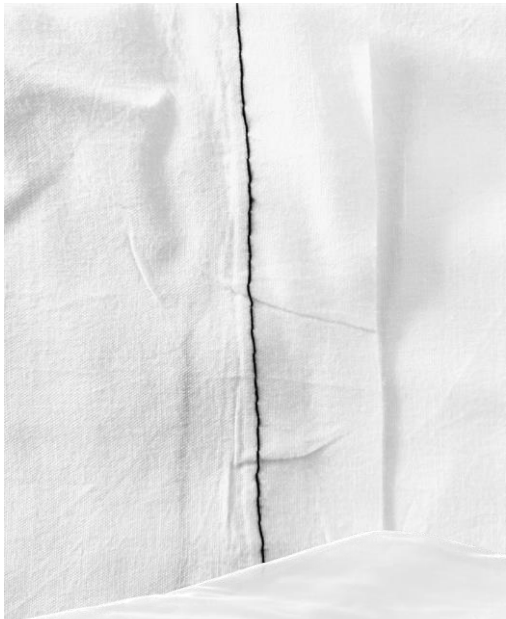
**MDAHS Catalog #**

**G 1180**

**Medline #MDTR1039914DS**

**Item Description**

Drawsheet, polybright, micropoly  
drawsheet, white, 100% polyester, 54" X  
72", 1" hems both ends with RED hem  
thread



Flat Sheet

**MDAHS Catalog #**

**G 1170**

**Medline**

**#MDTR1039914FC**

**Item Description**

Sheet, polybright  
micropoly flat  
sheet, white, 100%  
polyester, 66" X  
108", 1" hems both  
ends with GREEN  
hem thread



# 10 Fitted Sheets

Fitted Bed Sheet



MDAHS Catalog #

G1175

Medline #MDTNC7S27

Item Description

Sheet, bed, fitted, knit, white (available in bags of 5 sheets), 100% polyester, 24 oz. 30" X 92" X 15".

White w/ Teal Hem Thread, Performax

Fitted Stretcher Sheet



MDAHS Catalog #

G1185

Medline MDTR1290013NC

Item Description

Sheet, stretcher, fitted, single jersey knit, vat dyed misty green, 60% cotton/40% polyester. Stretcher size 28" X 72" X 4".



# 11 Towels

Bath Towel



MDAHS Catalog #

G1190

Medline #MDTBT4B60R

Item Description

Towel, bath, terry, white, 85% cotton/15% polyester, 16 single ring spun yarn, 22” X 44”, 6.0 lb., both selvages hemmed

Surgery Towel



MDAHS Catalog #

S3200

Medline #MDTST4A31MIS

Item Description

Towel, surgery, 100% cotton, absorbent weave, misty green, hemmed both ends or 4 hemmed edges. 18” x 33”

Blue Towel Rag



MDAHS Catalog #

S3220

Item Description

Blue Towel Rag, a disposable surgery towel, 100% cotton, absorbent weave, ceil blue, hemmed both ends or 4 hemmed edges.

Approx. size 16” x 20”

(Washed & Dried only - Subject to availability)



# 12 Washcloths

**Bar Mop**



**MDAHS Catalog #**

**G1161**

**Cromwell Tex. #103307-TEE**

**Item Description**

Bar mop, Beige, 13"x 13", rib terry,  
100% Cotton, 10S, Reactive dyed  
beige



*Bar mops come in 75ct.  
bags*

*Washcloths come in 50ct.  
bags*

**Washcloth**



**MDAHS Catalog #**

**G1200**

**Medline #MDTWC3B16HR**

**Item Description**

Washcloth, terry, white, 12" x 12", 100%  
cotton, 16 single yarn, 1.0 lb., hemmed  
4 sides.



13 Infant Items



Baby Blanket



MDAHS Catalog #

P2020

Medline #MDTPB3C40STR

Item Description

Blanket, baby, receiving, 30" X 40", 100% cotton, 3.3 lbs. per dozen, pink and blue/green candy stripes on white background, whip stitched or hemmed with cotton thread



Infant Shirt

MDAHS Catalog #

P2150

Medline #MDT2112702

Item Description

Shirt, infant, white, size 2 (6 month), long sleeve, mitten cuff, cotton knit, one snap inside and one snap outside at side seam

MDAHS Catalog #

P2200

Medline #MDT211399R

Item Description

Pre-Folded Gauze Diapers, white, 100% cotton, 14.5" x 21"

Gauze Diaper





# 14 Mopheads



**Mophead**

**MDAHS Catalog #**

**G1095**

**Medline #GSC72602**

**Item Description**

Mophead, 16 oz., radial flared, taped and looped ends, 1/3 cotton/1/3 polyester/1/3 nylon, 5-inch nylon mesh covered center band. Entire mophead to be medium green in color.



**Microfiber Mop Pad**



**MDAHS Catalog #**

**G1096**

**Phoenix #MFFM18BL-DZ-A**

**Item Description**

Microfiber Wet Mop Pad – 18"x 5½", Blue  
***Come in 50ct. bags***



# 15 Laundry Bags & Incontinence Pads

**Laundry Bag**



**MDAHS Catalog #**

**G1020**

**Phoenix #6351020**

**Item Description**

Bag, laundry, self-closing top, 200 Denier white nylon; flat dimensions: 36" X 45", 12" d diameter one-piece duffel bottom, envelope style

**Incontinence Pad**



**MDAHS Catalog #**

**G1300**

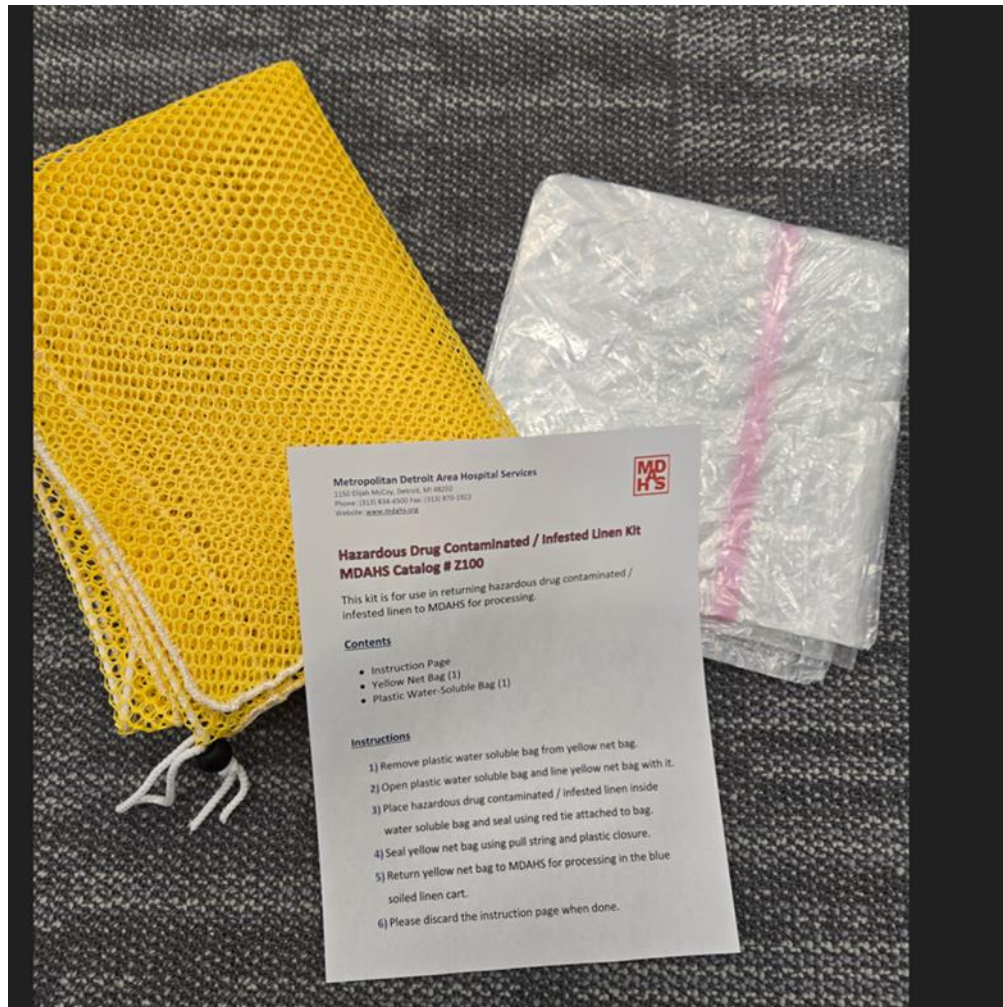
**Medline #MDTL1290013A**

**Item Description**

Adult Incontinence Pad, 34" x 36", Quick Dry Poly Laminated Underpad



# 16 Hazardous Drug Contaminated/Infested Linen Kit



## MDAHS Catalog #

**Z100**

## Item Description

Hazardous Drug Contaminated/Infested Linen Kit;

This kit is for use in returning hazardous drug contaminated/infested linen to MDAHS for processing; Contains yellow net bag (1), plastic water-soluble bag (1), instruction sheet (1)

**Infested Linen Kit**





## Member Services Team

**Member Services Manager**

Jo Dekmak

**Member Services Coordinator**

Emily Brown

